

Ke srážce však nedošlo! Místo aby narazili, vyjeli nahoru po stěně!



Hlídkové auto přeskakovalo z budovy na budovu!
„Pustte nás ven!“ ječela Daisy.

VŽUUUM!

Auto přistálo přímo na střeše nejvyšší budovy v LEGO City.
„To je na mě příliš!“ vydechla Daisy, „prosím, vezměte nás rovnou do vězení!“



ŽUCH!

„Ne, vrtulníkem ne!“
žadonil Frankie,
„Létání mám pro dnešek dost!“

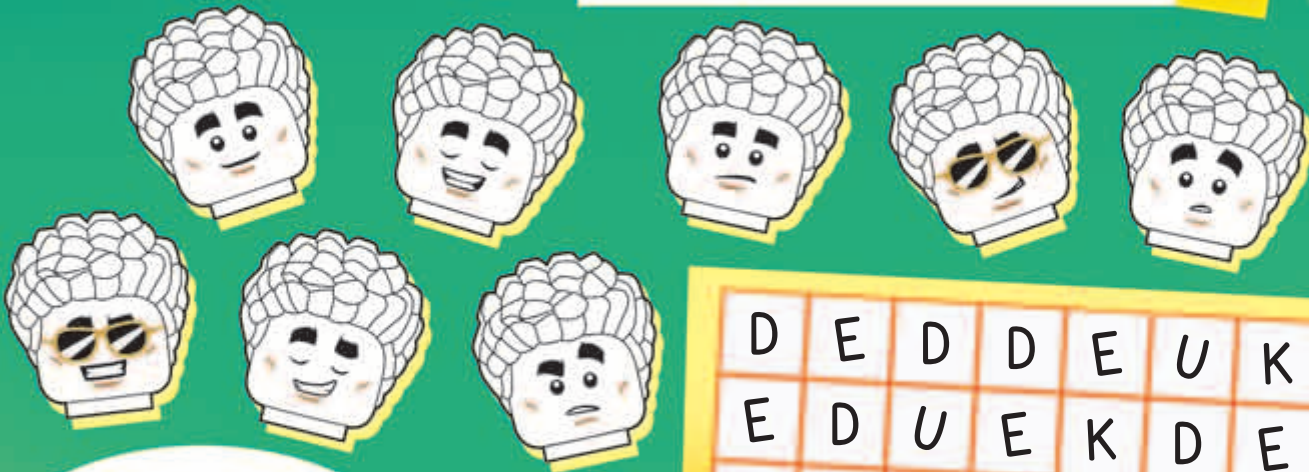
„Tak jo,“ nabídl se Duke, „rád vás tam zavezu!“

Oba padouši se rozběhli k helikoptěře a jednohlasně hulákali: „Cokoli, jen to ne!“



KONEC!

Vybarvi tolik Dukeových hlav, kolikrát najdeš jeho jméno v mřížce. Hledej jen vodorovně a svisle.

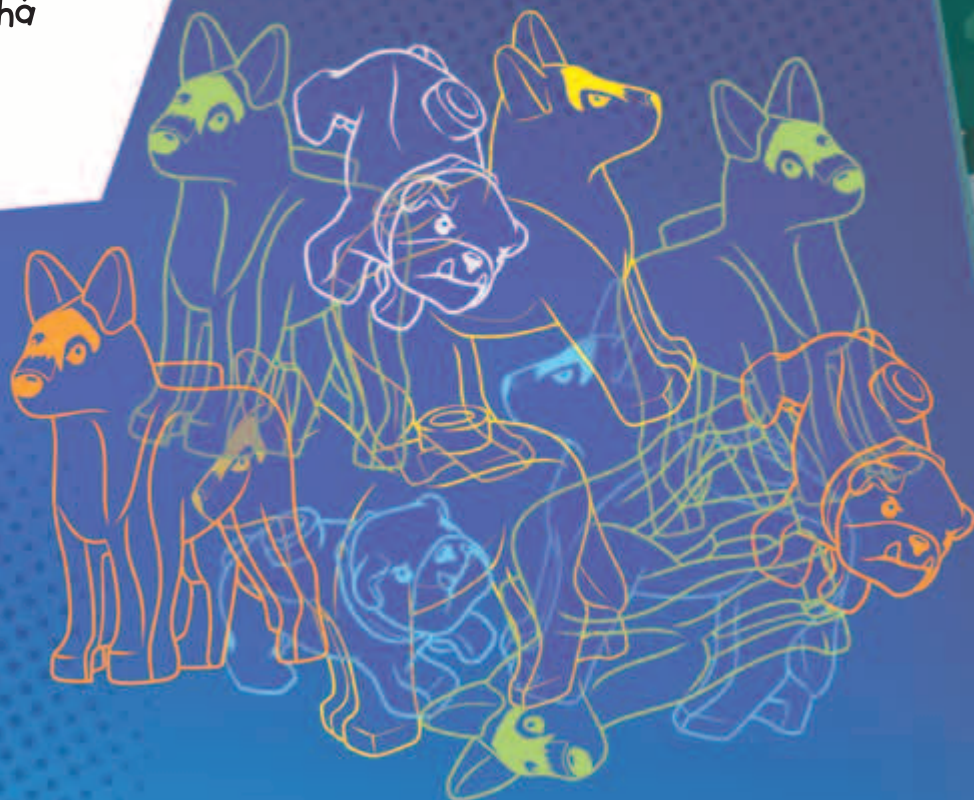


Duke DeTain - chytám grázly, je mi fajn!




















| | | | | | | | |
|---|---|---|---|---|---|---|---|
| D | E | D | D | E | U | K | D |
| E | D | U | E | K | D | E | U |
| K | D | K | U | D | U | K | E |
| U | K | E | D | K | E | D | K |
| D | D | U | E | K | U | U | D |
| U | K | D | D | U | K | E | U |
| K | U | U | E | K | D | U | K |
| E | D | K | D | U | K | E | K |

Kolik policejních psů pomáhá s řešením zločinů? Zapiš jejich počet níže.



Doplň mřížku tak, aby se jednotlivé dopravní prostředky nacházely v každém řádku, sloupci a každé ohraničené oblasti pouze jednou.

| | | | | |
|---|---|---|---|---|
|  2 |  1 |  5 | |  4 |
|  3 |  4 |  1 |  2 |  5 |
| |  2 |  4 | | |
| |  3 | |  5 | |
|  1 |  5 |  3 | |  2 |

| | | | | |
|---|---|---|---|---|
| 1 | 2 | 3 | 4 | 5 |
|  |  |  |  |  |